



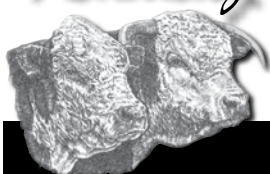
Hereford Show and Sale
March 2-4, 2012

Kentucky Fair and Exposition Center
New Market Hall • Louisville, Ky.



Kentucky Farm Bureau Beef Expo Hereford Show and Sale

March 2-4, 2012



Index to Consignors

CONSIGNOR	BULLS	FEMALES	EMBRYOS AND SEMEN
Ridgeview Farm, Alto, Mich. Bob and Jami Goble 616-299-8681	1	2, 3, 4	
Wolf Farm, Alexandria, Ky. Tim Wolf 859-991-3484		5	
Paul and Marsha Farno, Eaton, Ohio 937-456-6842		6	
Houston and Harrison Hutton, Pickens, S.C. Jim Hutton 864-915-0844	7, 8, 9	10, 11	
Boyd Beef Cattle, Mays Lick, Ky. Charlie Boyd Sr. 606-563-4412		12	
Barnes Herefords, Marietta, Ga. Tim Street, Mgr. 870-307-8578	13, 14	15	
River Circle Farm, Hartsville, Tenn. Martha Dixon and Julie Chapin 615-374-2883 or 615-633-1913	16	17, 18	
Ridgeway Farms and Crystal Emerson Junction City, Ky. 859-319-9206		19, 20	
Cottage Hill Farm, Petersburg, W.Va. Mike Taylor 304-668-0580	21	22, 23, 24	
Haney Polled Herefords, English, Ind. Shannon and Robin Haney 812-572-1309		25	
Popplewell Farms, Russell Springs, Ky. Alex Popplewell 270-566-1852		26, 27	
Beckley Herefords, Ravenna, Ky. L.W. Beckley 859-779-1419		28, 29, 30	
Annie and Allie Phillips and River Bend Farms, Waldron, Ind. Bill Doig 317-736-3724		31	
Thomas Farm, Richmond, Ky. Eric Thomas 859-314-8256		32, 33	
Ogle Polled Herefords, Shumway, Ill. Craig Ogle 217-663-2050		34, 35	
Gene and Lori Stumpf, Columbia, Ill. 618-407-8374 Cell	36	37, 38	39 Embryos
Semen Donation for Juniors			40-59 Semen
Gale Laudeman Family, Bremen, Ind. 574-298-6470	60, 61, 62		
Clifford Farms, Cynthiana, Ky. 859-234-6956	63, 64		

Hereford Show and Sale



54th Kentucky National 26th Kentucky Farm Bureau Beef Expo

Friday, March 2, 2012 • Show 1 p.m. • West Wing
Saturday, March 3, 2012 • Sale 12:30 p.m. • New Market Hall
Sunday, March 4, 2012 • Junior Heifer Show 8 a.m.

Bring your heifer from home or show your purchase from the 2012 Expo.
Contact Earlene Thomas at 859-623-5734

Kentucky Fair and Exposition Center

West Wing, Louisville, KY
502-367-5472

Ask for Kentucky Beef Expo Hereford Representative

Co-Sponsored by:

Kentucky Farm Bureau
Kentucky Hereford Association

Kentucky Department of Agriculture, Division of Shows and Fairs

Trade Show March 2-4, 2012 • West Wing

www.kybeefexpo.com

Special Guests

Steve Beshear

Governor Commonwealth of Kentucky

James Comer

Commissioner of Agriculture
Commonwealth of Kentucky

Chris Caudill

Beef Coordinator Shows and Fairs
Kentucky Department of Agriculture

Harold Workman

President, Expositions and Operations
Kentucky Fair and Exposition Center

Craig Huffhines

Executive Vice President
American Hereford Association

Sale Staff

Dale Stith

Auctioneer
Cell 918-760-1550

Joe Rickabaugh

American Hereford Association
785-633-3188

John Meents

American Hereford Association
419-306-7480

Jim Reed

Ringman
417-860-3102

Gene Steiner

Ringman
513-616-4086

Programs available at show.

See inside back page for an all breeds schedule.

Hotel Information

Fern Valley Hotel 502-964-3311 • Ask for Beef Expo block. Cut off date February 17, 2012.

Located just off I-65 at Exit 128, Fern Valley Rd.

Comfort Suites Airport, 6535 Paramount Park Dr., Louisville, KY — 502-964-0740

Catalog by: *Creative Services*

Directions to Kentucky Fair and Exposition Center

Located at the intersection of I-65 and the Waterson Expressway (I-264)

From the South, follow I-65 north to fairground signs

From the North, follow I-65 south to fairground signs

From the West, follow I-64 east to fairground signs

From the East, follow I-64 west or I-71 south to Waterson Expressway (I-264) to fairground signs

Dear Friends,

Welcome to the 26th Annual Kentucky Farm Bureau Beef Expo at the Kentucky Exposition Center. The Kentucky Department of Agriculture and Kentucky Farm Bureau are proud to sponsor the premier beef cattle event in the Commonwealth of Kentucky.

Kentucky is the leading beef cattle state east of the Mississippi River, and we have excellent quality to go with those strong numbers. This event provides an opportunity for cattle producers to showcase their herds and for buyers to have a chance to purchase the best genetics in the business. As a cattle producer myself, I fully understand the importance of a strong genetic base in a successful cattle herd.

With 12 breeds and the pen heifer show and sale, the Kentucky Farm Bureau Beef Expo has something for everyone. Not only are these animals a great way to improve a herd, they also represent an opportunity for our young exhibitors to select project animals for the 2012 KDA show circuit.

In addition to the breed shows and sales, we anticipate a great turnout for the judging contest. This program has grown into one of the premier judging contests in the country. Junior exhibitors also will have an opportunity to participate in the junior show on Sunday. Junior exhibitors from throughout the Midwest will compete with some of the best show stock in the country.

I am excited to be your Commissioner of Agriculture and to be involved with this great program. I can assure you the staff at the Kentucky Department of Agriculture will be working hard to make this Kentucky Farm Bureau Beef Expo a great one.

Sincerely,

James R. Comer

Commissioner of Agriculture

Commonwealth of Kentucky

502-573-0450

502-573-0046 Fax

james.comer@ky.gov

Welcome to the 2012 Kentucky Farm Bureau Beef Expo and Hereford Show and Sale. We are very proud to serve as the corporate sponsor of the Expo.

With over 500,000 members, Kentucky Farm Bureau is actively involved in ensuring that Kentucky agriculture remains a strong and vital element of our Commonwealth's economy.

Beef cattle are an integral part of Kentucky agriculture. We applaud the efforts of those who work so diligently to improve an industry already known for its excellence through events such as the 2012 Kentucky Farm Bureau Beef Expo.

Considering ever-increasing consumer demand for high quality and safe food, efforts to improve Kentucky's beef cattle industry are now more important than ever. The Expo offers you the latest industry news and information along with the opportunity to obtain some of the best breeding stock in the United States.

Again, we welcome you to the 2012 Kentucky Farm Bureau Beef Expo and hope the many valuable resources available here will benefit both you and your cattle operation.

Sincerely,

Mark Haney

President





GOBLE ACES N EIGHTS 321W — SIRE OF LOT 1

1 CLF GCC ACE'S HIGH Y202 Bull

P43207541 — Calved: Feb. 1, 2011 — Tattoo: LE Y202/RE CLF
 STAR TRF BATTLE CHIEF 356P (DLF,HYF,IEF) HB STAR BATTLE GROUND 2013 (DLF,HYF,IEF)
GOBLE ACES N EIGHTS 321W (DLF,HYF,IEF) STAR TRF MALLORY 47J
P43005983 JJD LAVERN 6019 ET NS KENO 005 (CHB)(DLF,HYF,IEF)
 LAKE LAVERN 201M

REMITALL PATRIOT ET 13P (CHB)(DLF,HYF,IEF) REMITALL OLYMPIAN ET 262L (CHB)
GRASSY 13P VICKY 610 REMITALL GINGER 23G (DLF,HYF,IEF)
P42761934 WILL-VIA MS VICTORIA M70 WILL-VIA CCC MAX
 WPH VICTORIA 4009 J77

- CE -1.7 (.06); BW 3.1 (.33); WW 44 (.23); YW 75 (.21); MM 21 (.09); M&G 43; MCE 1.8 (.05); SC 0.7 (.05); FAT 0.012 (.06); REA 0.17 (.08); MARB 0.13 (.05); BMI\$ 15; CEZ\$ 13; BII\$ 14; CHB\$ 21
- One of the first opportunities to get a piece of our new herd sire, Goble Aces N Eights. He has all the parts to be an outstanding herd sire. Lots of muscle, long bodied, big boned and very youthful looking with all kinds of growth. His dam has accomplished a lot at a young age: A daughter was reserve at the New York State Fair, a daughter is at Star Lake and another at Peak and Williams. Look this herd sire over and think about the possibilities that he can bring to an upcoming calf crop. Smoothness, style, a bunch of grow, maternal power and udder quality to name some.

• Consigned by Ridgeview Farm, Alto, Mich.



GRASSY 13P VICKY 610 — DAM OF LOT 1

2 DF PEARL DUCHESS D5Y Cow

P43215665 — Calved: May 14, 2011 — Tattoo: BE D5Y
 STAR TRF BATTLE CHIEF 356P (DLF,HYF,IEF) HB STAR BATTLE GROUND 2013 (DLF,HYF,IEF)
GR CHIEF DUKE 965 STAR TRF MALLORY 47J
P42994098 LAKE 002 KELLY 104P NS LAKES KILO 002
 LAKES'S 20X LEADING LADY 213L

LAKE RLC ONSTAR 29N REMITALL ONLINE 122L (SOD,CHB)(DLF,HYF,IEF)
LAKE PEARL 312S MSU BR STARLETTE 102K
P42707340 JG VICTORIA 579 2029 ANHINGA VIC 69R 579 (SOD)(DLF,HYF,IEF)
 AF VICTORIA 21L 53R

- CE 1.8 (.05); BW 3.3 (.12); WW 41 (.10); YW 73 (.09); MM 18 (.06); M&G 38; MCE 2.6 (.04); SC 0.6 (.03); FAT -0.010 (.04); REA 0.26 (.05); MARB 0.04 (.03); BMI\$ 16; CEZ\$ 16; BII\$ 14; CHB\$ 20
- This is a fancy granddaughter of our herd sire, Battle Chief, that goes back to Onstar on the dam's side. She is a younger division for someone looking for a younger calf. Very smooth made and surely a showing presence. With a pedigree full of functional females, I would rather be showing her than showing against her.

• Consigned by Ridgeview Farm, Alto, Mich.



LOT 3 — HCH GOBLE PERFECT TIMING Y203

3 HCH GOBLE PERFECT TIMING Y203 Heifer

P43219241 — Calved: Feb. 1, 2011 — Tattoo: LE Y203/RE HCH
 STAR BRIGHT FUTURE 533P ET (CHB)(DLF,HYF,IEF) REMITALL ONLINE 122L (SOD,CHB)(DLF,HYF,IEF)
RVP STAR 533P CAN-AM ET 57U (DLF,HYF,IEF) RB L1 DOMINETTE 8116
P42943507 STAR BONNIE BETH 54N CS BOOMER 29F (SOD,CHB)(DLF,HYF,IEF)
 HCC BONITA 8L

STAR TRF BATTLE CHIEF 356P (DLF,HYF,IEF) HB STAR BATTLE GROUND 2013 (DLF,HYF,IEF)
CLF LAKE 356P JULIE 31S STAR TRF MALLORY 47J
P42687556 CLF LAKE 002 HARRIET 31P NS LAKES KILO 002
 NPH 10H MS STOCKLING 31K

- CE -1.5 (P); BW 5.0 (.21); WW 48 (.18); YW 83 (.15); MM 19 (.08); M&G 42; MCE 2.7 (P); SC 0.7 (.05); FAT -0.013 (.06); REA 0.33 (.07); MARB 0.00 (.05); BMI\$ 15; CEZ\$ 13; BII\$ 13; CHB\$ 22
- Study the pedigree for a moment and you will realize that this female combines the influential foundation Ridgeview sires Kilo, Battle Chief and Can-Am. We knew that she would be good... and she knows she is. Her dam was a very popular show heifer being named reserve junior champion at the North American.

• Consigned by Ridgeview Farm, Alto, Mich.

4 SPH 743 STRIDE 7Y

Cow

P43214207 — Calved: Feb. 22, 2011 — Tattoo: LE 7Y

THM DURANGO 4037 (CHB)(DLF,HYF,IEF)
CRR ABOUT TIME 743 (CHB)(DLF,HYF,IEF)
P42797564 CRR D03 CASSIE 206

CS BOOMER 29F (SOD,CHB)(DLF,HYF,IEF)
THM 7085 VICTRA 9036 (DLF,HYF,IEF)
SHF INTERSTATE 20X D03 (SOD,CHB)
CRR 475E CASSIE 838

REMITALL KEYNOTE 20X (SOD,CHB)
SPH 20X STRIDE 20S
P42770023 SPH 38D GLITTER 18K

REMITALL TEAMSTER 9T
REMITALL PATRICIA 99P
WTK 21N SPARK 38D
ANL P183 MISS 33A 21C

- CE 0.4 (.15); BW 4.4 (.35); WW 51 (.23); YW 82 (.23); MM 17 (.12); M&G 42; MCE 1.0 (.12); SC 0.8 (.16); FAT -0.043 (.14); REA 0.57 (.15); MARB 0.04 (.14); BMI\$ 19; CEZ\$ 15; BII\$ 17; CHB\$ 27
- This heifer is hard to part with for us. She has the pedigree to make a sensational cow after her show career. She has breed legends Durango, Keynote, Boomer 29F and Interstate in her lineage. About Time has cut a swath of champions from coast to coast. Don't miss this opportunity. She should be staying with us but our loss will be your gain, this year and for years to come.

• Consigned by Ridgeview Farm, Alto, Mich.



STAR TRF BATTLE CHIEF 356P —
GRANDSIRE OF LOTS 1-3
RESIDENT RIDGEVIEW HERD SIRE

5 WOLF LINDA W31 Y29

Cow

P43241554 — Calved: Sept. 4, 2011 — Tattoo: BE Y29

THM DURANGO 4037 (CHB)(DLF,HYF,IEF)
CRR ABOUT TIME 743 (CHB)(DLF,HYF,IEF)
P42797564 CRR D03 CASSIE 206

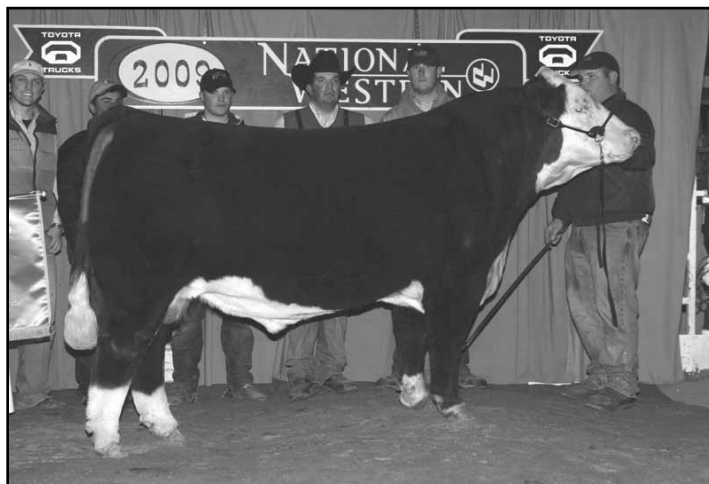
CS BOOMER 29F (SOD,CHB)(DLF,HYF,IEF)
THM 7085 VICTRA 9036 (DLF,HYF,IEF)
SHF INTERSTATE 20X D03 (SOD,CHB)
CRR 475E CASSIE 838

BOYD TOTAL BEEF 6108 ET
WOLF TOTAL BEEF S22 W31
P43043374 WOLF P606 DITSY 517 991 S22

REMITALL ONLINE 122L (SOD,CHB)(DLF,HYF,IEF)
BOYD Z86 FASINATION 3001 ET
PW VICTOR BOOMER P606 (SOD)(DLF,HYF,IEF)
WOLF 517 963 991

- CE 1.0 (P); BW 3.5 (P+); WW 53 (P+); YW 78 (P+); MM 21 (P+); M&G 47; MCE 2.6 (P); SC 0.9 (P+); FAT -0.030 (P); REA 0.48 (P); MARB 0.13 (P); BMI\$ 21; CEZ\$ 16; BII\$ 18; CHB\$ 28
- Linda is a fancy, dark red, red-necked, chisel-fronted calf out of a first calf heifer. She is backed with maternal pedigree and balanced EPDs. She will make an excellent junior prospect.

• Consigned by Wolf Farm, Alexandria, Ky.



CRR ABOUT TIME 743 — DENVER SUPREME CHAMPION
SIRE OF LOTS 4 AND 5

6 FPH YASMINE

Cow

P43223911 — Calved: May 5, 2011 — Tattoo: LE PMF/RE 3Y

FELTONS DOMINO 774 (SOD,CHB)(DLF,HYF,IEF)
FELTONS LEGEND 242 (SOD,CHB)(HYF)
P42016383 FELTONS G15

OXH DOMINO 7002 (SOD,CHB)(DLF,HYF,IEF)
FELTONS B72 (DOD)
FELTONS 549
FELTONS B32 (DOD)

SHF RED OAK M326 R96
FARNO VALERIE
P43005452 FARNO ANGELINA

KCF BENNETT 3008 M326 (CHB)(DLF,HYF,IEF)
SHF GOVERNESS 236G K38
MOHICAN HUNTER 57H (SOD,CHB)
ELN MISS REBEL 22D

- EPDs unavailable.
- Yasmine is a correct, well made female that is big topped, wide based and deep sided. Out of a first calf Red Oak heifer that followed in her dam's footsteps in the showing. She was a division winner at the Ohio State Fair and at the Ohio Futurity as well as reserve grand champion. She is sired by the trait leader, Feltons Legend 242.

• Consigned by Paul and Marsha Farno, Eaton, Ohio



LOT 6 — FPH YASMINE



LOT 7 — HUTTONS JETHRO 4066 SR212

7 HUTTONS JETHRO 4066 SR212 Bull

P43120746 — Calved: April 23, 2010 — Tattoo: LE 212/RE SR

KPH PHASE 121 (SOD,CHB)
TRM 2128 37E 121 KUDZU 4066 (CHB)(DLF,HYF,IEF)
P42516592 TRM 37E CROMAID 2128

TJ PHASE III
KPH VICKY R40 833
REMITALL EMBRACER 8E (SOD,CHB)(HYF)
GERBER BG1 CHROMAID 37E (DOD)

BR MOLER ET (CHB)(DLF,IEF)
CES SCARLETT 4002 G133 ET
P42905298 SOP MISS SCARLETT 24F 105M

REMITALL ONLINE 122L (SOD,CHB)(DLF,HYF,IEF)
DM L1 DOMINETTE 820
MW LLL FARLEY 24F (SOD,CHB)(DLF,HYF,IEF)
TNJ VICTORIA 43C 5084

- CE 3.0 (.12); BW 3.7 (.19); WW 46 (.18); YW 76 (.18); MM 21 (.15); M&G 44; MCE 2.6 (.10); SC 0.7 (.12); FAT -0.017 (.12); REA 0.17 (.13); MARB 0.05 (.12); BMI\$ 17; CEZ\$ 17; BII\$ 14; CHB\$ 23
- A big boned, stout Kudzu son that is ready for service now. Good EPDs in a complete package.
- Consigned by Houston and Harrison Hutton, Pickens, S.C.



LOT 8 — HUTTONS OTIS SR 221

8 HUTTONS OTIS SR 221 Bull

P43212907 — Calved: March 11, 2011 — Tattoo: LE 221/RE SR

KPH PHASE 121 (SOD,CHB)
TRM 2128 37E 121 KUDZU 4066 (CHB)(DLF,HYF,IEF)
P42516592 TRM 37E CROMAID 2128

TJ PHASE III
KPH VICKY R40 833
REMITALL EMBRACER 8E (SOD,CHB)(HYF)
GERBER BG1 CHROMAID 37E (DOD)

SR CG HARD ROCK 5073
JWR 027P MISS ROCK 168U
42961359 JWR 23L PRINCESS 027P

DB HARD DRIVE ET
SR MS MARK 9167 (DLF,IEF)
PW VICTOR BOOMER P606 (SOD)(DLF,HYF,IEF)
JWR VICTORIA 711 23L

- CE 1.1 (.11); BW 3.8 (.21); WW 49 (.19); YW 81 (.18); MM 26 (.13); M&G 51; MCE 1.6 (.09); SC 1.0 (.10); FAT 0.000 (.11); REA 0.25 (.12); MARB 0.06 (.10); BMI\$ 18; CEZ\$ 15; BII\$ 15; CHB\$ 23
- This boy has it all. Depth of rib, clean front end, square hip and lots of natural muscling. He was the Southeast Empire Livestock Show Champion Hereford Bull. He has an extraordinary set of EPDs and a big time future ahead of him.
- Consigned by Houston and Harrison Hutton, Pickens, S.C.



TRM 2128 37E 121 KUDZU 4066 — SIRE OF LOTS 7-11

9 HUTTONS WOODROW SR230 Bull

Pending — Calved: July 15, 2011 — Tattoo: LE 230/RE SR

KPH PHASE 121 (SOD,CHB)
TRM 2128 37E 121 KUDZU 4066 (CHB)(DLF,HYF,IEF)
P42516592 TRM 37E CROMAID 2128

TJ PHASE III
KPH VICKY R40 833
REMITALL EMBRACER 8E (SOD,CHB)(HYF)
GERBER BG1 CHROMAID 37E (DOD)

TRM BUDDY 9188
HUTTON'S VINDY
P42848689 HUTTON'S PROPHET

TRM E-PLURIBUS UNUM 5046
TRM INDI 45A ALPHA 5083
BTF CULTIVATOR 490 5038
HUTTONS VINDI

- CE 2.9 (P); BW 2.2 (P); WW 32 (P); YW 55 (P); MM 17 (P); M&G 33; MCE 2.3 (P); SC 0.7 (P); FAT 0.010 (P); REA -0.19 (P); MARB 0.06 (P); BMI\$ 17; CEZ\$ 18; BII\$ 16; CHB\$ 13
- Dark red with lots of eye pigment, this big boned calf's dam goes back to generations of cows that have worked for us. He is a little young... but will get over that. Give him a look. I think you will like what you see.
- Consigned by Houston and Harrison Hutton, Pickens, S.C.

10 HUTTONS IVY GIRL SR200 Cow

P43031955 — Calved: Oct. 4, 2009 — Tattoo: LE 200/RE SR
 KPH PHASE 121 (SOD,CHB) TJ PHASE III
 TRM 2128 37E 121 KUDZU 4066 (CHB)(DLF,HVF,IEF) KPH VICKY R40 833
 P42516592 TRM 37E CROMAID 2128 REMITALL EMBRACER 8E (SOD,CHB)(HVF)
 GERBER BG1 CHROMAID 37E (DOD)

BTF VICTOR 103T 9014 RHF IGT VICTOR 103T (SOD)
 HUTTONS MS SWIMMER 103T AF 120 BANDITA 774
 P42086552 HUTTON'S VOLTAGE TRM SAMSON 4036
 HUTTONS ESTELLA 102

- CE 2.6 (.10); BW 2.7 (.29); WW 38 (.24); YW 62 (.22); MM 17 (.13); M&G 36; MCE 0.8 (.08); SC 0.8 (.10); FAT 0.007 (.10); REA -0.16 (.12); MARB 0.04 (.09); BMI\$ 17; CEZ\$ 17; BII\$ 16; CHB\$ 15
- We have been breeding this heifer's bloodlines for 30+ years. She is thick, stout, very easy keeping and will have lots of milk.
- She is due to calve Jan. 25, 2012, to Boyd Performer J939.

• Consigned by Houston and Harrison Hutton, Pickens, S.C.



LOT 10 — HUTTONS IVY GIRL SR200

11 HUTTONS CAROLINA GIRL SR 225 Cow

P43212908 — Calved: April 3, 2011 — Tattoo: LE 225/RE SR
 KPH PHASE 121 (SOD,CHB) TJ PHASE III
 TRM 2128 37E 121 KUDZU 4066 (CHB)(DLF,HVF,IEF) KPH VICKY R40 833
 P42516592 TRM 37E CROMAID 2128 REMITALL EMBRACER 8E (SOD,CHB)(HVF)
 GERBER BG1 CHROMAID 37E (DOD)

REMITALL SILENCER 144S REMITALL LAGRD POUNDER ET 204P
 WALKER MISS 144S 042R 809 REMITALL BELLE 43L
 P42901257 JWR W126 BONNIE 042R JWR 9702 BLUEGRASS N3
 DW VICTORIA 218 W126

- CE 2.2 (.11); BW 3.8 (.31); WW 42 (.22); YW 70 (.21); MM 23 (.13); M&G 44; MCE 0.8 (.09); SC 0.8 (.10); FAT -0.010 (.11); REA -0.05 (.12); MARB 0.04 (.10); BMI\$ 16; CEZ\$ 16; BII\$ 14; CHB\$ 19
- A really thick made, deep bodied, high volume heifer. She won her class at the Southeastern Empire Livestock Show. She will make a front pasture female after her show career.
- Sells open.

• Consigned by Houston and Harrison Hutton, Pickens, S.C.



LOT 11 — HUTTONS CAROLINA GIRL SR 225

12 BOYD CH MOLLY 0036 Cow

P43206137 — Calved: Sept. 4, 2010 — Tattoo: BE 0036
 FELTONS DOMINO 774 (SOD,CHB)(DLF,HVF,IEF) OXH DOMINO 7002 (SOD,CHB)(DLF,HVF,IEF)
 FELTONS LEGEND 242 (SOD,CHB)(HVF) FELTONS B72 (DOD)
 P42016383 FELTONS G15 FELTONS 549
 FELTONS B32 (DOD)

BR MOLER ET (CHB)(DLF,IEF) REMITALL ONLINE 122L (SOD,CHB)(DLF,HVF,IEF)
 NPH FPC MOLERS DOMINETTE 713 DM L1 DOMINETTE 820
 P42820715 CH L1 DOMINETTE 8237 DR DOMINO 3135
 JA L1 DOMINETTE 3332

- CE 6.1 (.16); BW 0.0 (.33); WW 38 (.22); YW 62 (.22); MM 15 (.18); M&G 34; MCE 1.4 (.15); SC 0.7 (.16); FAT 0.010 (.15); REA 0.27 (.16); MARB 0.22 (.15); BMI\$ 21; CEZ\$ 21; BII\$ 19; CHB\$ 22
- This female is correct, sound, stylish and has plenty of rib shape for a brood cow.
- Serviced AI Nov. 27, 2011, to the \$135,000 TH 71U 719T Mr Hereford 11X.

• Consigned by Boyd Beef Cattle, Mays Lick, Ky.



FELTONS LEGEND 242 — SIRE OF LOT 12



LOT 13 — JWR 743 CLEAN GENES 007Y

13 JWR 743 CLEAN GENES 007Y Bull

P43180426 — Calved: Jan. 17, 2011 — Tattoo: LE 007Y/RE JWR
 TRM 37E 121 KING 3238
 RRO TRM CLEAN GENES 6201
 P42761713 TRM 2250 SPENDOR P606 4189

KPH PHASE 121 (SOD,CHB)
 GERBER BG1 CHROMAID 37E (DOD)
 PW VICTOR BOOMER P606 (SOD)(DLF,HYF,IEF)
 RRO TRM VIVIAN 2250 (DOD)

M&M P606 EMILY 743
 P42876340 M&M 579 VICTORA K125

PW VICTOR BOOMER P606 (SOD)(DLF,HYF,IEF)
 REMITALL BOOMER 46B (SOD,CHB)(DLF,HYF,IEF)
 PW VICTORIA 964 8114
 ANHINGA VIC 69R 579 (SOD)(DLF,HYF,IEF)
 M&M VINDICATE 150

- CE -1.6 (.06); BW 4.9 (.32); WW 51 (.19); YW 71 (.19); MM 32 (.09); M&G 57; MCE -1.6 (.06); SC 0.7 (.07); FAT 0.015 (.09); REA 0.37 (.10); MARB 0.02 (.08); BMI\$ 12; CEZ\$ 11; BII\$ 11; CHB\$ 21
- This moderate frame, easy doing bull screams maternal as he is double bred P606. I look forward to seeing females out of this young sire to be pretty uddered and last years in the herd with added pounds at weaning. Truly one not to go unnoticed!

• Consigned by Barnes Herefords, Marietta, Ga.



STAR 26P INDY ROSE 288T — DAM OF LOT 15

14 JWR 13W MCCORMICK 036Y Bull

43180448 — Calved: March 8, 2011 — Tattoo: LE 036Y/RE JWR
 CMR TF 242 GARRETT 430 (DLF,HYF,IEF)
 JWR LPH P416 MCCORMICK 105T
 P42862099 PW BOOMTOWN GIRL P416 (DLF,HYF,IEF)

FELTONS LEGEND 242 (SOD,CHB)(HYF)
 TF COW MADE 920 226
 REMITALL BOOMER 46B (SOD,CHB)(DLF,HYF,IEF)
 PW VICTORIA 964 8114

PW VICTOR BOOMER P606 (SOD)(DLF,HYF,IEF)
 BIG P606 WILLA 13W ET
 P43017078 GERBER 412T ROSY LANE 065K

REMITALL BOOMER 46B (SOD,CHB)(DLF,HYF,IEF)
 PW VICTORIA 964 8114
 GK EXPLOSION 412T (SOD)(DLF,HYF,IEF)
 GERBER BG1 ROSY LANE 24E

- CE -1.8 (.09); BW 5.8 (.32); WW 57 (.17); YW 83 (.17); MM 28 (.10); M&G 57; MCE -2.6 (.08); SC 0.9 (.07); FAT 0.038 (.08); REA 0.58 (.09); MARB 0.15 (.08); BMI\$ 16; CEZ\$ 11; BII\$ 14; CHB\$ 26
- This young horned bull is truly the combination bull. He is good fronted and well designed without sacrificing the power and ruggedness it takes to stand out in a crowd. 036Y is one that will work in any breeding program as many great ones do!

• Consigned by Barnes Herefords, Marietta, Ga.



LOT 15 — JWR 288T MISS DEMAND 042Y

15 JWR 288T MISS DEMAND 042Y Cow

P43180428 — Calved: March 17, 2011 — Tattoo: LE 042Y/RE JWR
 REMITALL ONLINE 122L (SOD,CHB)(DLF,HYF,IEF)
 DESTIN ON DEMAND 122L F114 ET (DLF,HYF,IEF)
 P42807126 CES VICKY 776 P70

REMITALL EMBRACER 8E (SOD,CHB)(HYF)
 REMITALL CATALINA 24H
 FHF CL DOMINO 614R 77U (SOD)
 CES VICTRESS F77 H230

STAR TRF INDEPENDENCE 26P ET (DLF,HYF,IEF)
 STAR 26P INDY ROSE 288T
 P42776175 FBF ROSIE 04JR

STAR AMERICA BNMHPH SS MKS 68M (DLF,HYF,IEF)
 STAR TRF MALLORY 47J
 FBF BA DA BING 417M ET
 STAR TRF AMGEN 504J

- CE 1.4 (.08); BW 5.2 (.33); WW 51 (.20); YW 83 (.19); MM 18 (.10); M&G 43; MCE 3.9 (.07); SC 0.5 (.06); FAT -0.026 (.09); REA 0.49 (.10); MARB -0.06 (.09); BMI\$ 16; CEZ\$ 16; BII\$ 12; CHB\$ 24
- This daughter of the popular Destin On Demand 122L F114 ET is good numbered and has the phenotype to match. She is jet fronted, big middled and catlike in her movement. 042Y is one that combines everything needed to fit in anyone's program!
- Terms sale day.

• Consigned by Barnes Herefords, Marietta, Ga.

16 RC ROCKSTAR 135 ET

Bull

43209126 — Calved: Jan. 12, 2011 — Tattoo: BE 135
DB HARD DRIVE ET

SR CG HARD ROCK 5073
P42612624 SR MS MARK 9167 (DLF,IEF)

REMITALL ONLINE 122L (SOD,CHB)(DLF,HVF,IEF)
B&S MISS SUMMIT 145E
SR EXPECTATION 5130
SR L1 LADY 6110

CB OUTBACK 1J
RC MS OUTBACK 108 (DLF,HVF,IEF)
42187267 SR DOMINETTE 4030

JSF 37 271 DEVO 23C (SOD)
CB MISS DOLORES 15G
CL 1 DOMINO 386 (SOD)(DLF,IEF)
SR PACETTE 6026

- CE -1.5 (P); BW 4.3 (.19); WW 54 (.17); YW 87 (.16); MM 22 (.13); M&G 49; MCE 1.4 (P); SC 0.8 (.07); FAT 0.000 (.08); REA 0.40 (.09); MARB 0.00 (.07); BMI\$ 16; CEZ\$ 12; BII\$ 13; CHB\$ 24
- Rockstar is the result of a very special mating for us. This flush did not produce a lot of eggs, but the calves have been tremendous. Rockstar's full brother, RC Rock On 753, was the 2010 Show Bull of the Year. He has also been our herd sire. Another full brother was purchased by Burns Farms in Tennessee and will be used in their operation. We are retaining the only heifer produced from this mating and are anticipating her to be a future donor. The Hard Rock semen is virtually non-existent and the daughters are making tremendous cows throughout the country. Rockstar is rugged boned, huge topped and packed full of red meat. Don't miss an opportunity to own these superior genetics. Maternal brother to Lot 17.
- Consigned by River Circle Farm, Hartsville, Tenn.



LOT 16 — RC ROCKSTAR 135 ET

17 RC MS EMILY ONTIME 132 ET

Cow

P43201875 — Calved: Jan. 8, 2011 — Tattoo: BE 132

BECKLEYS LEGEND 242 758P
BECKLEY 758P ONTIME 934S (CHB)(DLF,HVF,IEF)
P42704982 BECKLEYS 122L KAYELA 799P ET

FELTONS LEGEND 242 (SOD,CHB)(HVF)
DRF COW GIRL 49H 27M
REMITALL ONLINE 122L (SOD,CHB)(DLF,HVF,IEF)
DRF SUN WINONA 19D 17I

CB OUTBACK 1J
RC MS OUTBACK 108 (DLF,HVF,IEF)
42187267 SR DOMINETTE 4030

JSF 37 271 DEVO 23C (SOD)
CB MISS DOLORES 15G
CL 1 DOMINO 386 (SOD)(DLF,IEF)
SR PACETTE 6026

- CE 1.0 (P); BW 4.4 (.20); WW 50 (.17); YW 83 (.17); MM 12 (.12); M&G 37; MCE 0.1 (P); SC 0.6 (.11); FAT -0.010 (.10); REA 0.45 (.11); MARB 0.03 (.09); BMI\$ 17; CEZ\$ 15; BII\$ 15; CHB\$ 24
- 132 is a full sib to RC Will Ontime 134 ET. This bull has already made a splash in the showing. He was the Keystone Reserve National Champion in Harrisburg, Pa. He was purchased by Howell Herefords, Kentucky. We are now offering this full sib for sale. You won't find a heifer any longer fronted or bodied. She is very strong topped and is square hipped. She is out of our donor cow that has produced so many winners for us. We have several daughters in our herd and they make tremendous cows. Her sire needs no introduction in Kentucky. He has sired many showing champions and has produced top cows throughout the country. Buy this heifer with confidence as she will make an awesome cow.
- Consigned by River Circle Farm, Hartsville, Tenn.



LOT 17 — RC MS EMILY ONTIME 132 ET

18 RC MS ROCK 140

Cow

P43200540 — Calved: March 11, 2011 — Tattoo: BE 140

SR CG HARD ROCK 5073
RC ROCK ON 753
P42910826 RC MS OUTBACK 108 (DLF,HVF,IEF)

DB HARD DRIVE ET
SR MS MARK 9167 (DLF,IEF)
CB OUTBACK 1J
SR DOMINETTE 4030

REMITALL ONLINE 122L (SOD,CHB)(DLF,HVF,IEF)
SRF MISS VICKY ET
P42932670 MSU BR MARKETTE 55N

REMITALL EMBRACER 8E (SOD,CHB)(HVF)
REMITALL CATALINA 24H
MSU BR HALLMARK 25H
MSU BR MARKETTE L61

- CE -0.3 (.06); BW 5.0 (.30); WW 56 (P+); YW 91 (P+); MM 20 (P+); M&G 48; MCE 3.3 (.05); SC 0.8 (P+); FAT -0.010 (.06); REA 0.50 (.06); MARB 0.00 (.05); BMI\$ 17; CEZ\$ 14; BII\$ 14; CHB\$ 26
- RC Ms Rock 140 is out of one of our best young cows. This cow was purchased from the Laudeman's in Indiana. She had a successful show career herself, winning many regional shows. She has now become a tremendous cow. Last year's calf was purchased out of this sale by the Tim Wolf family. 140's sire is a full brother to the bull we are selling, RC Rockstar 135 ET. This bull was 2010 Southeast Show Bull of the Year. Buy this heifer for her phenotype and her great genetics. Hard Rock and Online daughters continue to make tremendous cows all over the country.
- Consigned by River Circle Farm, Hartsville, Tenn.



LOT 18 — RC MS ROCK 140

19 RW CE SUPER SASSY

Cow



P43197756 — Calved: May 14, 2011 — Tattoo: BE Y15
 REMITALL PATRIOT ET 13P (CHB)(DLF,HVF,IEF) REMITALL OLYMPIAN ET 262L (CHB)
 REMITALL SUPER DUTY 42S (CHB)(DLF,HVF,IEF) REMITALL GINGER 23G (DLF,HVF,IEF)
 P42898550 REMITALL RITA 91H FELTONS 517 (SOD,CHB)(HYF) REMITALL FLORIAL RITA 102F

THM DOMINO LAD 0828 BT CL DOMINO 15G (SOD)
 MPH VICTORIA 0828 232D WBHF BELLE STAR R30
 P42711682 MPH 15G VICTORIA 363K MPH VICTOR 475 150G MPH 218 VICTORIA 258G

- EPDs unavailable.
- Sassy could easily be a good investment for a young junior to take around the shows this year. Her mother is a very powerful cow and has the total package anyone would want in a herd. Sassy is dark red and will catch your eye.
- Consigned by Ridgeway Farms and Crystal Emerson, Junction City, Ky.

REMITALL SUPER DUTY 42S — SIRE OF LOTS 19 AND 20
 \$270,000 REMITALL DISPERSAL TOP SELLER

20 RW CE FANCY

Cow



P43197757 — Calved: May 7, 2011 — Tattoo: BE Y16
 REMITALL PATRIOT ET 13P (CHB)(DLF,HVF,IEF) REMITALL OLYMPIAN ET 262L (CHB)
 REMITALL SUPER DUTY 42S (CHB)(DLF,HVF,IEF) REMITALL GINGER 23G (DLF,HVF,IEF)
 P42898550 REMITALL RITA 91H FELTONS 517 (SOD,CHB)(HYF) REMITALL FLORIAL RITA 102F

PCR ONLINE ET 338N REMITALL ONLINE 122L (SOD,CHB)(DLF,HVF,IEF)
 MPH MS ONLINE 338N 465T PCR PHRANCINE GAL 825H (DOD)
 P43082578 MPH 15G VICTORIA 352J MPH VICTOR 475 150G MPH 15G LASSIE 60C

- EPDs unavailable.
- Fancy! Her name says it all. She is a really neat heifer. She would be fun for a junior this summer. She has a wonderful Online mother. Fancy is a dark red sweetheart.
- Consigned by Ridgeway Farms and Crystal Emerson, Junction City, Ky.

REMITALL RITA 91H — DAM OF SUPER DUTY

21 CHF TTF DURANGO 096X ET

Bull



P43237555 — Calved: Oct. 1, 2010 — Tattoo: RE 096X
 CS BOOMER 29F (SOD,CHB)(DLF,HVF,IEF) REMITALL BOOMER 46B (SOD,CHB)(DLF,HVF,IEF)
 THM DURANGO 4037 (CHB)(DLF,HVF,IEF) CS MISS 1ST FLAG 21A (DOD)(DLF,IEF)
 P42460503 THM 7085 VICTRA 9036 (DLF,HVF,IEF) THM VICTOR DOM 7085 THM VICTRA 5404 7073

OHF MR BRAXTON 517 302H FELTONS 517 (SOD,CHB)(HYF)
 TJ SRM BRAXIE 302H 201 (DOD)(DLF,IEF) OHF MS BRAXTON MAX 110E (DOD)
 P42265688 TJ EZ VICTORIA P88 939 CES VICTOR M90 P88 TJ VICKY EZ 538

- CE 4.4 (P); BW 1.0 (P); WW 44 (P); YW 77 (P); MM 19 (P); M&G 41; MCE 3.7 (P); SC 0.6 (P); FAT -0.013 (P); REA 0.11 (P); MARB 0.15 (P); BMI\$ 18; CEZ\$ 19; BII\$ 14; CHB\$ 24
- CHF TTF Durango 096X ET is a stout, well made herd bull prospect. He has a balanced set of EPDs and is a calving ease bull with a 75 lb. birth wt. He is smooth shouldered, deep bodied and has plenty of thickness.
- Selling full interest and full possession.

THM DURANGO 4037 — SIRE OF LOT 21

- Consigned by Cottage Hill Farm, Petersburg, W.Va.

22 CHF TTF KAT ELLA 170Y ET Cow

P43235932 — Calved: July 2, 2011 — Tattoo: LE 170Y
 REMITALL EMBRACER 8E (SOD,CHB)(HYF) REMITALL ACME 10A (SOD)
 NJW 8E 120J EMBASSY 81S ET (DLF,HYF,IEF) PLAIN LAKE BELLE 20X 117P 5B
 P42694824 SADDLE VLY LADYSPORT 120 RU DUSTER 60D (CHB)
 GK LADYSPORT 131A

SPORTING FLD ONLINE 2223 REMITALL ONLINE 122L (SOD,CHB)(DLF,HYF,IEF)
 KAT'S BILLIE GIRL 848 CHF (DLF,HYF,IEF) JBH MISS BASIC H027
 P42906793 UHF FANCY GAL 05 PDM LOGAN 434V 7085
 MOHICAN FANCY 73K

- CE -1.3 (P); BW 5.7 (P); WW 54 (P); YW 85 (P); MM 20 (P); M&G 47; MCE 2.4 (P); SC 0.7 (P); FAT -0.025 (P); REA 0.50 (P); MARB -0.07 (P); BMI\$ 15; CEZ\$ 13; BII\$ 12; CHB\$ 24
- Ella is a super cow prospect that is correct, balanced and sound. She is a very stylish July heifer calf with natural thickness and bone. This heifer has loads of potential to be competitive in the showing. Don't overlook this young heifer. Full sister to Lot 23.
- Sells open.

• Consigned by Cottage Hill Farm, Petersburg, W.Va.



NJW 8E 120J EMBASSY 81S ET — SIRE OF LOTS 22 AND 23

23 CHF TTF KAT CARLIE 176Y ET Cow

P43235871 — Calved: June 26, 2011 — Tattoo: LE 176Y
 REMITALL EMBRACER 8E (SOD,CHB)(HYF) REMITALL ACME 10A (SOD)
 NJW 8E 120J EMBASSY 81S ET (DLF,HYF,IEF) PLAIN LAKE BELLE 20X 117P 5B
 P42694824 SADDLE VLY LADYSPORT 120 RU DUSTER 60D (CHB)
 GK LADYSPORT 131A

SPORTING FLD ONLINE 2223 REMITALL ONLINE 122L (SOD,CHB)(DLF,HYF,IEF)
 KAT'S BILLIE GIRL 848 CHF (DLF,HYF,IEF) JBH MISS BASIC H027
 P42906793 UHF FANCY GAL 05 PDM LOGAN 434V 7085
 MOHICAN FANCY 73K

- CE -1.3 (P); BW 5.7 (P); WW 54 (P); YW 85 (P); MM 20 (P); M&G 47; MCE 2.4 (P); SC 0.7 (P); FAT -0.025 (P); REA 0.50 (P); MARB -0.07 (P); BMI\$ 15; CEZ\$ 13; BII\$ 12; CHB\$ 24
- This June Embassy heifer has the spring of rib and volume to become a valuable brood cow. Carlie also has smooth lines with a clean front and that showing look. Juniors, take note. This young heifer could wear a show halter.
- Sells open.

• Consigned by Cottage Hill Farm, Petersburg, W.Va.



SADDLE VLY LADYSPORT 120 — NATIONAL CHAMPION COW AND DAM OF EMBASSY 81S

24 CHF DAISY MAE 164Y Cow

P43235966 — Calved: Sept. 10, 2011 — Tattoo: LE 164Y
 REMITALL ONLINE 122L (SOD,CHB)(DLF,HYF,IEF) REMITALL EMBRACER 8E (SOD,CHB)(HYF)
 STAR OPPORTUNITY NOX 529W ET (DLF,HYF,IEF) REMITALL CATALINA 24H
 P43043757 GERBER 774 ROSY LANE 623S (DLF,HYF,IEF) FELTONS DOMINO 774 (SOD,CHB)(DLF,HYF,IEF)
 GERBER 8020 ROSY LANE 308N (DLF,HYF,IEF)

SSF 8F CALL 759 BRL CALL 100L (SOD,CHB)(DLF,IEF)
 MNT DAISY 713 CHF CEO SHEYENNE 8F
 P42906792 MISS CONCISE 337 CHF DUNWALKE CONCISE 460D
 FSL MISS PROPHETTE 29X

- CE (); BW 4.1 (P); WW 49 (P); YW 79 (P); MM 18 (P); M&G 42; MCE (); SC 1.0 (P); FAT -0.018 (P); REA 0.35 (P); MARB 0.12 (P); BMI\$; CEZ\$; BII\$; CHB\$
- A dark red pigmented heifer out of the STAR Opportunity Nox bull that we own with Star Lake. Daisy Mae is a long sided, deep middled, stylish young September heifer that would make a nice show heifer for a junior over the next two years.
- Sells open.

• Consigned by Cottage Hill Farm, Petersburg, W.Va.



GERBER 774 ROSY LANE 623S — \$45,000 DONOR DAM OF "OPPORTUNITY NOX"



**CRR ABOUT TIME 743 —
DENVER SUPREME CHAMPION HEREFORD
SIRE OF LOT 25**

25 HPH AB SUMMER DAISY 204R Cow

P43234503 — Calved: March 22, 2011 — Tattoo: RE 204
 THM DURANGO 4037 (CHB)(DLF,HYF,IEF) CS BOOMER 29F (SOD,CHB)(DLF,HYF,IEF)
 CRR ABOUT TIME 743 (CHB)(DLF,HYF,IEF) THM 7085 VICTRA 9036 (DLF,HYF,IEF)
 P42797564 CRR D03 CASSIE 206 SHF INTERSTATE 20X D03 (SOD,CHB)
 CRR 475E CASSIE 838

BIG T 75A BONAIRE C76 WTK 55Y BOND 75A (SOD)(DLF,HYF,IEF)
RBS BONITA 6 QRR VICTRA F243 T194
 P42104403 RBS MISS NICKI 9C (D00) BIG T NICKSON Y21
 RBS MISS BANNER 469L 35W (D00)

- CE 1.5 (P); BW 3.0 (P); WW 42 (P); YW 64 (P); MM 16 (P); M&G 37; MCE 1.8 (P); SC 0.7 (P); FAT -0.030 (P); REA 0.39 (P); MARB 0.04 (P); BMI\$ 19; CEZ\$ 16; BII\$ 18; CHB\$ 21
- Summer Daisy's dam is 11 years old and still has a perfect udder. This may be her best calf yet. The heifer has good EPDs and a birth wt. of 83 lb. You can't go wrong with the dam and sire of this heifer.

• Consigned by Haney Polled Herefords, English, Ind.



**REMITALL PATRIOT ET 13P —
GRANDSIRE OF LOTS 26 AND 27**

26 AKP MS PATRIOT 106 Cow

P43225410 — Calved: April 21, 2011 — Tattoo: BE 106
 REMITALL PATRIOT ET 13P (CHB)(DLF,HYF,IEF) REMITALL OLYMPIAN ET 262L (CHB)
 GRANDVIEW F111 PATRIOT 6170 ET REMITALL GINGER 23G (DLF,HYF,IEF)
 P42721763 DUNWALKE VICTORIA F111 ANHINGA VIC 69R 579 (SOD)(DLF,HYF,IEF)
 JR P183 ROSE X134

MHF GOLD RUSH 552R C -S PURE GOLD 98170 (SOD,CHB)(DLF,IEF)
MHF 552 INTRIGUE 715T MHF LADY ADELIN 836
 P42812286 MHF INTRIGUE 223 LJR D188 PARAGON 7G
 MHF MS ETIQUETTE A67

- EPDs unavailable.
- What a tremendous, wide hiped, thick muscled, dark red female. A very stylish and eye-catching heifer. Her mother performed well in her show career and she should do the same against some stiff competition. Juniors, take a look!

• Consigned by Popplewell Farms, Russell Springs, Ky.

27 AKP MS KENDRA 108 Cow

P43223736 — Calved: May 8, 2011 — Tattoo: BE 108
 REMITALL PATRIOT ET 13P (CHB)(DLF,HYF,IEF) REMITALL OLYMPIAN ET 262L (CHB)
 GRANDVIEW F111 PATRIOT 6170 ET REMITALL GINGER 23G (DLF,HYF,IEF)
 P42721763 DUNWALKE VICTORIA F111 ANHINGA VIC 69R 579 (SOD)(DLF,HYF,IEF)
 JR P183 ROSE X134

RWD ESCROW 106L DS KCK LEGEND 10J
SHOWTIME KENDRA S17 RWD PRINCESS JASMINE 49D
 P42756372 BLAKES ZOIEY 205 RED IMR AKG POWER 92
 BLAKES CHLOE 904

- EPDs unavailable.
- A very nice, stylish, late spring heifer calf whose grandsire is Remitall Patriot. She has lots of length and plenty of bone substance throughout. No doubt she will be very competitive in the showing this show season.

• Consigned by Popplewell Farms, Russell Springs, Ky.

Dates To Remember

February, 15-18, 2012

National Farm Machinery Show

Visit our Booth

June 7-9, 2012

Southeast Regional Junior Show

L.D. Brown Expo Center

Bowling Green, Ky.

28 BECKLEY 793T BELLE 1027 Cow

P43175044 — Calved: Feb. 26, 2011 — Tattoo: BE 1027

JJD MR GOLD 2001 ET (DLF,HYF,IEF)
BECKLEY 2001 CURRENCY 783T
P42843336 BECKLEYS 122L KAYELA 799P ET

C-S PURE GOLD 98170 (SOD,CHB)(DLF,IEF)
JJJ VICTORIA 109W 112
REMITALL ONLINE 122L (SOD,CHB)(DLF,HYF,IEF)
DRF SUN WINONA 19D 171

BECKLEY 758P ONTIME 934S (CHB)(DLF,HYF,IEF)
JPH BECKLEY 934S BELLETIME922W
P43001579 DCC H BELLE H6024

BECKLEYS LEGEND 242 758P
BECKLEYS 122L KAYELA 799P ET
BR DM CHANNING ET (CHB)(DLF,IEF)
H MISS 19D BELLE 0102

- CE 3.0 (.06); BW 2.0 (.36); WW 43 (.19); YW 73 (.19); MM 15 (.07); M&G 37; MCE 2.8 (.05); SC 0.6 (.07); FAT -0.010 (.07); REA 0.63 (.08); MARB 0.04 (.07); BMI\$ 19; CEZ\$ 18; BII\$ 16; CHB\$ 23
- This heifer has it all. 1027 is soggy middled and pretty fronted with a powerful hip. She is out of a 2-year-old with a picture perfect udder. Cow, show heifer or both, she will work.

• Consigned by Beckley Herefords, Ravenna, Ky.



BECKLEY 758P ONTIME 934S — SIRE OF LOTS 17, 29 AND 30

29 BECKLEY 934S KEAYLA 1046 Cow

P43239262 — Calved: Sept. 9, 2011 — Tattoo: BE 1046

BECKLEYS LEGEND 242 758P
BECKLEY 758P ONTIME 934S (CHB)(DLF,HYF,IEF)
P42704982 BECKLEYS 122L KAYELA 799P ET

FELTONS LEGEND 242 (SOD,CHB)(HYF)
DRF COW GIRL 49H 27M
REMITALL ONLINE 122L (SOD,CHB)(DLF,HYF,IEF)
DRF SUN WINONA 19D 171

PWF MOHICAN KABOOM P430 ET (DLF,HYF,IEF)
BECKLEY P430 KEAYLA 863U
P42947269 BECKLEYS 122L KAEYLA 790P ET

REMITALL BOOMER 46B (SOD,CHB)(DLF,HYF,IEF)
PW VICTORIA 964 8114
REMITALL ONLINE 122L (SOD,CHB)(DLF,HYF,IEF)
DRF SUN WINONA 19D 171

- CE 0.9 (P); BW 3.4 (P+); WW 51 (P+); YW 87 (P+); MM 14 (P+); M&G 39; MCE 1.5 (P); SC 0.7 (P+); FAT 0.000 (P); REA 0.75 (P); MARB 0.11 (P); BMI\$ 19; CEZ\$ 15; BII\$ 17; CHB\$ 27
- A really powerful, feminine heifer out of one of our best young cows. She catches visitors eyes pretty quick. Study her pedigree and phenotype. You will like her.

• Consigned by Beckley Herefords, Ravenna, Ky.

30 BECKLEY 934S MS ONTIME 1042 Cow

P43239263 — Calved: Sept. 2, 2011 — Tattoo: BE 1042

BECKLEYS LEGEND 242 758P
BECKLEY 758P ONTIME 934S (CHB)(DLF,HYF,IEF)
P42704982 BECKLEYS 122L KAYELA 799P ET

FELTONS LEGEND 242 (SOD,CHB)(HYF)
DRF COW GIRL 49H 27M
REMITALL ONLINE 122L (SOD,CHB)(DLF,HYF,IEF)
DRF SUN WINONA 19D 171

PWF MOHICAN KABOOM P430 ET (DLF,HYF,IEF)
BECKLEY P430 BOOM BABY 871U
P42947280 SR ONLINE LIBERTY 114P

REMITALL BOOMER 46B (SOD,CHB)(DLF,HYF,IEF)
PW VICTORIA 964 8114
REMITALL ONLINE 122L (SOD,CHB)(DLF,HYF,IEF)
GERBER 091J SOUTHERN GIRL 061L

- CE -0.1 (P); BW 3.3 (P+); WW 52 (P+); YW 87 (P+); MM 15 (P+); M&G 40; MCE 0.7 (P); SC 0.7 (P+); FAT 0.000 (P); REA 0.71 (P); MARB 0.10 (P); BMI\$ 18; CEZ\$ 14; BII\$ 16; CHB\$ 27
- A 7/8 sister to 1046. She is very similar in kind and should be a birth weight tool with a 68 lb. actual birth wt.

• Consigned by Beckley Herefords, Ravenna, Ky.

31 RB AAP 207T FANCY 321Y Cow

P43198523 — Calved: March 21, 2011 — Tattoo: LE 321Y/RE RB

LAGRAND RELOAD 80P ET (CHB)(DLF,HYF,IEF)
MHPH 80P TONKA 207T (DLF,IEF)
P42875945 BET-AN 23C KATHY 10K

AA PRF WIDELOAD
TSF MS KEYNOTE 729
JSF 37 271 DEVO 23C (SOD)
BET-AN 75A HILLARY 14H

TH JWR SOP 16G 57G TUNDRA 63N (CHB)(DLF,HYF,IEF)
RB BMD 63N RUN MELVA RUN 225T
P42831641 ELM-LODGE MELVA 11L

RU 20X BOULDER 57G (CHB)
TEE-JAY 707B GEMINI 16G ET
ELM-LODGE JALAPENO 6J
ELM-LODGE SWEETHEART 20Y

- CE -2.5 (.07); BW 5.0 (.34); WW 46 (.19); YW 79 (.18); MM 21 (.10); M&G 43; MCE -0.4 (.06); SC 0.5 (.07); FAT -0.017 (.07); REA 0.31 (.08); MARB -0.04 (.06); BMI\$ 11; CEZ\$ 11; BII\$ 10; CHB\$ 20
- Straight out of the heart of William G. Doig's River Bend cow herd, "Fancy" was a popular pedigree full of dominance in the showing. Fancy is the third full sister in a row sired by Tonka and out of a hard to find Tundra 63N daughter. The dam of Fancy was the reserve grand champion cow-calf at the 2009 and 2010 Kentucky State Fairs. The maternal grandam of Fancy was the 2004 North American Reserve National Champion Cow-Calf. Two full sisters to Fancy have won the following: 2010 JNHE Division I Champion Owned Heifer, 2010 JNHE Division I Reserve Champion Bred-and-Owned Heifer, 2009 Indiana State Fair Reserve Calf Champion, 2010 Kentucky State Fair Reserve Calf Champion and 2011 Kentucky State Fair Reserve Champion Yearling Heifer. Annie and Allie didn't want to let this one go, but sometimes you just have to sell the good ones!

• Consigned by Annie and Allie Phillips and River Bend Farms, Waldron, Ind.



RB BMD 63N RUN MELVA RUN 225T — DAM AND FULL SISTER TO LOT 31



**PW VICTOR BOOMER P606 —
GRANDSIRE OF LOTS 32 AND 33**



**REMITALL ONLINE 122L —
GRANDSIRE OF LOTS 34 AND 35**

32 TF MS STOCK 741 101 Cow

P43218820 — Calved: Feb. 1, 2011 — Tattoo: LE 101/RE TF
 HPH STOCKER 493C 137 (SOD,CHB)(DLF,HYF,IEF) NPH 512 THE STOCKER 10H (CHB)
 RV STOCKER 666Z (CHB)(DLF,HYF,IEF) S&S D LADY 493C
 P42756458 HPH MISS EXTEND 4H 1162 CT EXTENSION 9925 (CHB)
 HPH MISS DIGGER 19B 4H

PW VICTOR BOOMER P606 (SOD)(DLF,HYF,IEF) REMITALL BOOMER 46B (SOD,CHB)(DLF,HYF,IEF)
 TF MISS P606 741 PW VICTORIA 964 8114
 42868728 MOHICAN LADY 74M REMITALL BOOMER 46B (SOD,CHB)(DLF,HYF,IEF)
 MOHICAN LADY 35G

- CE -2.9 (.10); BW 6.0 (.34); WW 52 (.22); YW 84 (.22); MM 25 (.11); M&G 52; MCE -2.5 (.08); SC 0.5 (.14); FAT 0.010 (.13); REA 0.69 (.14); MARB 0.14 (.12); BMI\$ 13; CEZ\$ 9; BII\$ 11; CHB\$ 26
- Dark red, red-eyed, soggy Stocker daughter. She is out of one of our best young P606 daughters. Super cow and show prospect.
- Consigned by Thomas Farm, Richmond, Ky.

34 OPH IRIS 06X Cow

P43100053 — Calved: March 24, 2010 — Tattoo: LE 06X/RE OPH
 REMITALL ONLINE 122L (SOD,CHB)(DLF,HYF,IEF) REMITALL EMBRACER 8E (SOD,CHB)(HYF)
 SF SWEET SIGN IN ONLINE 026 ET REMITALL CATALINA 24H
 P42829941 MSU BR KEY M ARKETTE 100K REMITALL KEYNOTE 20X (SOD,CHB)
 BR MARKETTE 2009 (DOD)

FELTONS LEGEND 242 (SOD,CHB)(HYF) FELTONS DOMINO 774 (SOD,CHB)(DLF,HYF,IEF)
 BERG 242 JEN 44R FELTONS G15
 P42648573 BERG MISS ACCLAIM 30F GERBER ACCLAIM 43A
 JMB MISS GRANITE

- CE 1.3 (.08); BW 3.3 (.14); WW 48 (.12); YW 80 (.12); MM 17 (.10); M&G 41; MCE 1.5 (.08); SC 0.8 (.08); FAT 0.021 (.09); REA 0.25 (.09); MARB 0.13 (.08); BMI\$ 18; CEZ\$ 16; BII\$ 16; CHB\$ 23
- A big bodied, deep ribbed heifer that we showed last year. She is going to be a front pasture cow that will make you money. Her mom has brought in one of our top heifers every year. 06X is out of our herd bull that is a full brother to BH Connection.
- She is bred for an early June calf to C Domino 8126 ET that is owned by Lowderman Cattle Co. and Albin Farms in Illinois. If you are looking for a bred heifer that will make a great cow, don't miss her sale day.
- Consigned by Ogle Polled Herefords, Shumway, Ill.

33 TF ABIGALE 416 110 Cow

P43218827 — Calved: March 20, 2011 — Tattoo: LE 110/RE TF
 BECKLEY 758P ONTIME 934S (CHB)(DLF,HYF,IEF) BECKLEYS LEGEND 242 758P
 BECKELY 934S ONTIME 840U BECKLEYS 122L KAYELA 799P ET
 P42892699 BECKLEYS MISS 721N BURKS ACHIEVER 8403 0031
 BECKLEYS MISS 509J

PW VICTOR BOOMER P606 (SOD)(DLF,HYF,IEF) REMITALL BOOMER 46B (SOD,CHB)(DLF,HYF,IEF)
 TF MISS P606 748 416 PW VICTORIA 964 8114
 P42518098 ET MS 218 P308 748 TF PAYLOAD 218
 PW TORI P308

- CE -0.2 (.05); BW 3.2 (.32); WW 43 (.17); YW 67 (.17); MM 22 (.09); M&G 44; MCE -0.7 (.05); SC 0.5 (.06); FAT 0.026 (.06); REA 0.46 (.07); MARB 0.07 (.05); BMI\$ 13; CEZ\$ 13; BII\$ 12; CHB\$ 19
- A really complete Ontime granddaughter. She is feminine and thick with a super look. She is also out of a top P606 daughter. Juniors, take a look.
- Consigned by Thomas Farm, Richmond, Ky.

35 OPH REAGAN 03Y Cow

P43234012 — Calved: Jan. 18, 2011 — Tattoo: LE 03Y/RE OPH
 REMITALL ONLINE 122L (SOD,CHB)(DLF,HYF,IEF) REMITALL EMBRACER 8E (SOD,CHB)(HYF)
 SF SWEET SIGN IN ONLINE 026 ET REMITALL CATALINA 24H
 P42829941 MSU BR KEY M ARKETTE 100K REMITALL KEYNOTE 20X (SOD,CHB)
 BR MARKETTE 2009 (DOD)

BIG T 44B PRO-BOSS E127 HRP CES VICTOR 964 44B (SOD)
 GPHF MS PRO BOSS E127 415 BIG T CLAIRE C142
 P42548898 GPHF 15S MS MONARCH 601 BAR B 15S MONARCH
 GPHF MS SUNDANC 314 8101

- CE -0.7 (P); BW 4.2 (P); WW 52 (P); YW 94 (P); MM 20 (P); M&G 45; MCE 2.1 (P); SC 0.9 (P); FAT 0.000 (P); REA 0.39 (P); MARB 0.04 (P); BMI\$ 17; CEZ\$ 13; BII\$ 14; CHB\$ 25
- A deep ribbed, soggy heifer that we should be keeping. She is out of a full brother to BH Connection. Her mom is a really deep, soggy cow that is a donor for us. She will hold her own in the showring but her best work will be in the pasture after her show career. She is going to be fun for a junior to show, so look for her show day.
- Consigned by Ogle Polled Herefords, Shumway, Ill.

36 GEN-LOR MORE AMERICAN 1209 ET Bull

P43178887 — Calved: Sept. 20, 2010 — Tattoo: LE 1209

RST ROF STAR LINEDRIVE
STAR AMERICA BNMHPH SS MKS 68M (DLF,HYF,IEF)
P42250709 STAR MKS WESTERN STAR 55 (DLF,HYF,IEF)

MSU STAR HEADLINER (SOD)(DLF,HYF,IEF)
RST TARGETTE 40C
CS BOOMER 29F (SOD,CHB)(DLF,HYF,IEF)
WESTERN PLEASURE

CS BOOMER 29F (SOD,CHB)(DLF,HYF,IEF)
STAR TRF MALLORY 47J
P42004080 SIS

REMITALL BOOMER 46B (SOD,CHB)(DLF,HYF,IEF)
CS MISS 1ST FLAG 21A (SOD)(DLF,IEF)
BB MSU 15S WISDOM (CHB)
ACE MAGICS SIS 4W

- CE 0.7 (P); BW 5.0 (.25); WW 46 (.24); YW 78 (.23); MM 19 (.23); M&G 41; MCE 2.6 (P); SC 0.7 (.15); FAT 0.000 (.19); REA 0.19 (.20); MARB 0.04 (.18); BMI\$ 16; CEZ\$ 15; BII\$ 14; CHB\$ 21
- This bull is very complete. He is sired by the national champion, STAR America 68M. His dam is STAR Mallory 47J, one of the breed's premier donors. He is very long bodied and clean fronted with a nice square hip. He walks out good and covers his tracks well. To go along with his looks, he has a well-balanced set of EPDs. As a September yearling bull, he is ready to go in the pasture. You'll be proud to own him.

• Consigned by Gene and Lori Stumpf, Columbia, Ill.



LOT 36 — GEN-LOR MORE AMERICAN 1209 ET

37 GEN-LOR MAZIE MAIL 1202 Cow

P43179172 — Calved: Feb. 28, 2011 — Tattoo: LE 1202

REMITALL ONLINE 122L (SOD,CHB)(DLF,HYF,IEF)
STAR YOUVE GOT MAIL 207U ET
P42872257 DAN 3008 FOXY GAL 2E 1N (DLF,HYF,IEF)

REMITALL EMBRACER 8E (SOD,CHB)(HYF)
REMITALL CATALINA 24H
RRH MR FELT 3008 (SOD,CHB)(DLF,HYF,IEF)
CPH TC OPTINA 2E

STAR 12G PRESTON 113M ET
GEN-LOR MARGO PRESS 359
P42601454 GK MADAME EX 510C

HAROLDSON'S PRINGLE 20X 12G (CHB)(DLF,HYF,IEF)
BIGT 75A BONITA C156
GK FED EX 500Z (SOD)
GK ERICA 548A

- CE -0.8 (.06); BW 5.2 (.23); WW 55 (.13); YW 93 (.13); MM 16 (.07); M&G 43; MCE 1.8 (.06); SC 1.1 (.05); FAT -0.020 (.06); REA 0.45 (.06); MARB 0.08 (.05); BMI\$ 21; CEZ\$ 14; BII\$ 19; CHB\$ 28
- This February heifer is well pigmented. Her sire, You've Got Mail, was the lead bull in the 2009 Champion carload for StarLake. She is very long, deep bodied, has a square hip, and a flawless front end. She will be very competitive in the showing this summer. But even more important, she will make an even better cow in the future. Juniors, take a look at this one. Sells open and calfhod vac.

• Consigned by Gene and Lori Stumpf, Columbia, Ill.



LOT 37 — GEN-LOR MAZIE MAIL 1202

38 GEN-LOR RUBY WRANGLER 1232 ET Cow

P43242212 — Calved: Sept. 4, 2011 — Tattoo: LE 1232

NJW 1Y WRANGLER 19D (SOD,CHB)(HYF)
STAR MKS WESTERN WRANGLER SS (DLF,HYF,IEF)
P42357712 STAR MKS WESTERN STAR 55 (DLF,HYF,IEF)

CIRCLE-D WRANGLER 832W (SOD,CHB)(HYF)
NJW FROSTY 1Y
CS BOOMER 29F (SOD,CHB)(DLF,HYF,IEF)
WESTERN PLEASURE

REMITALL ONLINE 122L (SOD,CHB)(DLF,HYF,IEF)
STAR RICKI LYNN 534P ET (DLF,HYF,IEF)
P42483847 STAR RICKI 162M

REMITALL EMBRACER 8E (SOD,CHB)(HYF)
REMITALL CATALINA 24H
H 8E EMBRACER 8006 (CHB)
STAR ROCKIN ERICA 38F (DLF,HYF,IEF)

- CE 0.9 (P); BW 4.7 (P); WW 50 (P); YW 84 (P); MM 21 (P); M&G 46; MCE 4.4 (P); SC 0.8 (P); FAT -0.040 (P); REA 0.56 (P); MARB -0.01 (P); BMI\$ 18; CEZ\$ 16; BII\$ 15; CHB\$ 26
- This is a very exciting heifer. She has national champions on top and bottom of her pedigree. Her dam is our lead donor cow. This heifer's maternal sister was reserve champion heifer at the Missouri State Fair and was the champion heifer at the Star Lake Futurity. She is long bodied and deep sided with a nice feminine front end. Juniors, take a look at this fancy heifer for your next show heifer.
- Sells open and calfhod vaccinated.

• Consigned by Gene and Lori Stumpf, Columbia, Ill.

39 Four (4) Frozen Embryos

REMITALL EMBRACER 8E (SOD,CHB)(HYF)
REMITALL ONLINE 122L (SOD,CHB)(DLF,HYF,IEF)
P42254372 REMITALL CATALINA 24H

REMITALL ACME 10A (SOD)
PLAIN LAKE BELLE 20X 117P 5B
MM RSM STOCKMASTER 512 (SOD,CHB)(DLF,HYF,IEF)
REMITALL CATALINA 139C

HAROLDSON'S PRINGLE 20X 12G (CHB)(DLF,HYF,IEF)
STAR KKH MKS PRISSY KAY 137M ET
P42250790 KAYE KAYE

REMITALL KEYNOTE 20X (SOD,CHB)
THE CLIFFS P183 JOY 5C
GK EXCELLO 116B
JR LB 621 SAPPHIRE Y163

- Sire: CE 1.5 (.77); BW 5.0 (.94); WW 64 (.92); YW 111 (.91); MM 21 (.90); M&G 53; MCE 8.7 (.77); SC 1.4 (.78); FAT -0.031 (.78); REA 0.57 (.81); MARB 0.11 (.76); BMI\$ 26; CEZ\$ 19; BII\$ 20; CHB\$ 35
- Dam: CE -7.0 (.18); BW 5.1 (.36); WW 47 (.30); YW 76 (.29); MM 15 (.30); M&G 39; MCE -4.4 (.17); SC 0.7 (.12); FAT -0.023 (.21); REA 0.33 (.22); MARB -0.12 (.19); BMI\$ 11; CEZ\$ 6; BII\$ 13; CHB\$ 17
- These embryos are out of the legendary Online 122L and STAR Prissy Kay. Prissy Kay was reserve champion at a past Junior National. A full sister to these embryos sold in this sale two years ago. She was one of the top sellers in the sale, selling for \$3,300. The opportunities are endless with this pedigree.

• Consigned by Gene and Lori Stumpf, Columbia, Ill.

Semen Donation to the Southeast Regional Junior Show

June 7-9, 2012

L.D. Brown Expo Center, Bowling Green, Ky.

For semen, contact owner unless otherwise specified.

**Donated by Boyd Beef Cattle,
Mays Lick, Ky.**

- Lot 40* Boyd Masterpiece 0220 5 Straws
- Lot 41* MSU TCF Revolution 4R 5 Straws
- Lot 42* Feltons Legend 242 5 Straws
- Lot 43* Boyd Worldwide 9050 ET 5 Straws

Donated by Genex Stud

- Lot 44* TH 122 71I Victor 719T 5 Straws
Contact Brad Johnson 715-526-7613

Donated by ABS Stud

- Lot 45* KCF Bennett 9126J R294 5 Straws
Contact David McGlontin 859-544-3944

Donated by KABA (Select Sires)

- Lot 46* NJW 98S Durango 44U 5 Straws
Contact Kenley Conner 505-905-7825

**Donated by J&L Cattle Services,
Jeromesville, Ohio**

- Lot 47* Boyd NJW Stand Out 0091 ET 5 Straws

**Donated by Reed Farms,
Green Ridge, Mo.**

- Lot 48* KJ C&L Logic 023R 5 Straws

**Donated by Beckley Herefords,
Ravenna, Ky.**

- Lot 49* Beckley 758P Ontime 934S ET 5 Straws

Donated by Thomas Farm, Richmond, Ky.

- Lot 50* PW Victor Boomer P606 5 Straws

**Donated by Peyton Well Polled Herefords,
Stanford, Ky.**

- Lot 51* PW Mohican Nasdaq P316 5 Straws

**Donated by Botkin Polled Herefords,
Lexington, Ky.**

- Lot 52* PWF Victory Lane P415 5 Straws

**Donated by Michigan State University,
E. Lansing, Mich.**

- Lot 53* MSU Xerox 20X 5 Straws

**Donated by Grassy Run Farms,
Winfield, W.Va.**

- Lot 54* STAR Bright Future 533P 5 Straws
- Lot 55* NJW 120J Embassy 81S 5 Straws

**Donated by DeLHawk Cattle Co.,
Earlville, Ill.**

- Lot 56* DeLHawk Kahuna 1009 ET 5 Straws

**Donated by Star Lake Cattle Ranch,
Skiatook, Okla.**

- Lot 57* STAR Market Index 70X ET 5 Straws

**Donated by Doss Hereford Farm,
Smithville, Mo.**

- Lot 58* Boyd Performer J939 5 Straws

**Donated by Ned and Jan Ward,
Sheridan, Wyo.**

- Lot 59* NJW 73S Trust M326 100W ET 5 Straws

60 SRF MR JUSTIN ET

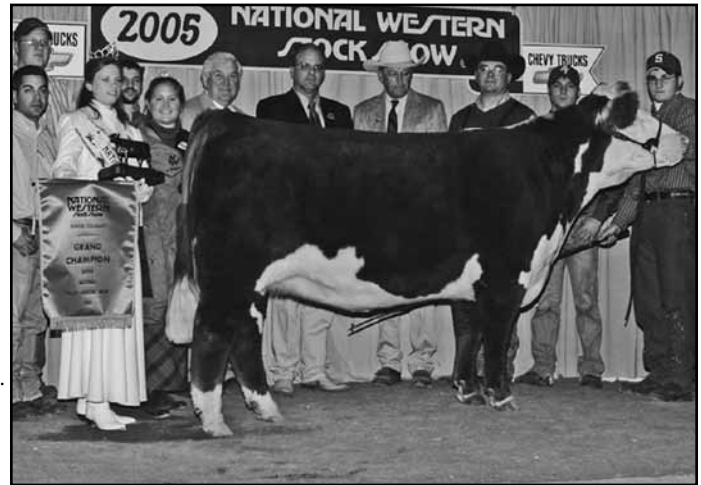
Bull

P43220268 — Calved: Oct. 4, 2010 — Tattoo: BE 21X
 BR DM CHANNING ET (CHB)(DLF,IEF) REMITALL ONLINE 122L (SOD,CHB)(DLF,HYF,IEF)
 H EASY DEAL 609 ET (CHB)(DLF,HYF,IEF) DM L1 DOMINETTE 820
 P42717067 C MS PURE GOLD 2003 C -S PURE GOLD 98170 (SOD,CHB)(DLF,IEF)
 C 8403 MS ACHV 96047

MSU BR HALLMARK 25H
 MSU BR MARKETTE 55N REMITALL KEYNOTE 20X (SOD,CHB)
 P42392484 MSU BR MARKETTE L61 BR L1 DOMINETTE 8077
 KFF TOTAL
 BR MARKETTE 2009 (DOD)

- CE -0.1 (P); BW 4.0 (.24); WW 47 (.21); YW 81 (.20); MM 19 (.12); M&G 42; MCE 1.9 (P); SC 0.4 (.09); FAT -0.002 (.11); REA 0.61 (.12); MARB -0.01 (.10); BMI\$ 13; CEZ\$ 13; BII\$ 11; CHB\$ 22
- A very thick son of H Easy Deal and out of the famed donor, MSU BR Markette 55N. This pedigree needs no introduction.

• Consigned by Gale Laudeman Family, Bremen, Ind.



MSU BR MARKETTE 55N — DAM OF LOT 60, GRANDMOTHER OF LOT 61 AND 62.

61 SRF ZIP CODE

Bull

P43220279 — Calved: March 3, 2011 — Tattoo: BE 2Y
 BR MOLER ET (CHB)(DLF,IEF) REMITALL ONLINE 122L (SOD,CHB)(DLF,HYF,IEF)
 C RENO 6142 ET (DLF,IEF) DM L1 DOMINETTE 820
 42701502 C NOTICE ME ET C -S PURE GOLD 98170 (SOD,CHB)(DLF,IEF)
 HH MISS ADVANCE 104A (DOD)

CS BOOMER 29F (SOD,CHB)(DLF,HYF,IEF) REMITALL BOOMER 46B (SOD,CHB)(DLF,HYF,IEF)
 SRF MISS GRETCHEN ET CS MISS 1ST FLAG 21A (DOD)(DLF,IEF)
 P42977507 MSU BR MARKETTE 55N SU BR HALLMARK 25H
 MSU BR MARKETTE L61

- CE 0.0 (.09); BW 5.4 (.28); WW 55 (.19); YW 86 (.19); MM 20 (.10); M&G 48; MCE 3.0 (.08); SC 0.5 (.10); FAT -0.017 (.12); REA 0.58 (.12); MARB 0.03 (.11); BMI\$ 16; CEZ\$ 14; BII\$ 12; CHB\$ 27
- This Reno son out of a 29F x 55N daughter has lots of style and balance.

• Consigned by Gale Laudeman Family, Bremen, Ind.

62 SRF MISS ANGIE

Cow

Pending — Calved: May 30, 2011 — Tattoo: BE 20Y
 CS BOOMER 29F (SOD,CHB)(DLF,HYF,IEF) REMITALL BOOMER 46B (SOD,CHB)(DLF,HYF,IEF)
 SRF DEAL OR NO DEAL ET (DLF,IEF) CS MISS 1ST FLAG 21A (DOD)(DLF,IEF)
 P42786836 MSU BR MARKETTE 55N MSU BR HALLMARK 25H
 MSU BR MARKETTE L61

HB HORIZON 4110
 SRF MISS MISSY
 P42321445 TAB MISS LINDA 8C

K&B HORIZON 9208 1ET (SOD,CHB)
 HB MISS 75901 6006
 VPH SOLOMON 104
 TAB BANNER

- Sire: CE 1.7 (.19); BW 3.4 (.44); WW 46 (.30); YW 76 (.30); MM 20 (.19); M&G 43; MCE 3.5 (.17); SC 0.4 (.15); FAT -0.005 (.16); REA 0.49 (.18); MARB -0.04 (.16); BMI\$ 14; CEZ\$ 16; BII\$ 11; CHB\$ 21
- Dam: CE 0.0 (.10); BW 3.1 (.38); WW 36 (.23); YW 58 (.22); MM 5 (.16); M&G 23; MCE -0.6 (.10); SC 0.4 (.06); FAT -0.009 (.06); REA -0.01 (.08); MARB 0.00 (.05); BMI\$ 15; CEZ\$ 14; BII\$ 16; CHB\$ 14
- This May heifer will compete this summer. She is sired by Deal or No Deal, the 2008 North American International Livestock Expo National Champion Bull that is a full brother to the dam of Lot 61.

• Consigned by Gale Laudeman Family, Bremen, Ind.

63 CHF SUNRISE KANDI 11Y

Cow

Pending — Calved: March 3, 2011 — Tattoo: BE 11Y
 FELTONS DOMINO 774 (SOD,CHB)(DLF,HYF,IEF) OXH DOMINO 7002 (SOD,CHB)(DLF,HYF,IEF)
 FELTONS LEGEND 242 (SOD,CHB)(HYF) FELTONS B72 (DOD)
 P42016383 FELTONS G15 FELTONS 549
 FELTONS B32 (DOD)

SSF P606 VICTOR 784
 CHF SUNRISE LASS 03U PW VICTOR BOOMER P606 (SOD)(DLF,HYF,IEF)
 P43062641 ECA 13E KANDI 45G 16K WTK 38D CARMELITA 156F
 NJW 832W D32 LATIGO 45G
 ECA ESTELLE EAA 13E

- EPDs unavailable.
- Granddaughter of Kandi 45G from the Arnholdt herd. We bought her at the state sale in Shelbyville in 2002 with her first calf. We now have a lot of her progeny in our herd.

• Consigned by Clifford Farms, Cynthiana, Ky.

64 CHF SUNRISE KANDI 31Y

Cow

Pending — Calved: May 20, 2011 — Tattoo: BE 31Y
 KCF BENNETT K200 N435 KCF BENNETT H142 K200
 FSL N435 40P 47U KCF MISS 8020 D170 (DOD)
 P42881390 FSL MISS VICTORIA L76 40P KCF BENNETT H142 L76 (CHB)
 FSL DOMINETTE 52F (DOD)

NJW 832W D32 LATIGO 45G
 ECA 13E KANDI 45G 16K
 P42147092 ECA ESTELLE EAA 13E
 CIRCLE-D WRANGLER 832W (SOD,CHB)(HYF)
 JR Y53 WILMA D32
 REMITALL BOOMER 46B (SOD,CHB)(DLF,HYF,IEF)

- EPDs unavailable.
- Daughter of Kandi 45G from the Arnholdt herd.

• Consigned by Clifford Farms, Cynthiana, Ky.

Terms and Conditions

- Terms:** Terms of the sale are cash. Each animal will be sold to the highest bidder. The auctioneer will settle any disputes as to bids.
- Purchase:** Each animal will be at the purchaser's risk as soon as sold and can be moved after settlement has been made. The animal can be left in the West Wing for 24 hours at the purchaser's risk of loss or injury.
- Health:** All cattle will have health certificates that will enable them to be shipped to any state.
- Consignor's Responsibility:** The seller is the responsible party for all representations made about his cattle. The management of the sale assumes no liability, legal or otherwise, but will endeavor to protect the interest of both the buyer and the seller.
- Changes:** Changes in these conditions will be binding only when reduced to writing and signed by the seller, buyer or clerk of the sale. Verbal agreements result in misunderstanding and the above rule is made to avoid such. Any changes in breeding dates will be announced sale day. Announcements from the sale box take precedence over anything printed in this catalog.
- Papers:** The certificates will be transferred to the buyer at the seller's expense. All calves born after the sale are to be registered by the purchaser. No AI certificates are furnished.
- Note:** As the sale manager, Kentucky Hereford Association is only an agent for the seller and has no responsibilities other than those involved in conducting the sale. All persons who attend the sale do so at their own risk. Neither the owners of the consigned cattle nor the Kentucky Hereford Association assumes liability, legal or otherwise, for any accidents which may occur.
-

KENTUCKY HEREFORD ASSOCIATION

L.W. Beckley • President

Earlene Thomas • Secretary/Treasurer

DIRECTORS

Lowell Atwood
L.W. Beckley
Charlie Boyd, Sr.
Scott Burks

Paul Hancock
H. Pile
Vince Popplewell
Garry Rutledge

Tony Staples
Eric Thomas
Tim Wolf
David Zurmehly



MARCH 2-4, 2012

JACKPOT HEIFER SHOW

Sunday, March 4, 2012 • 8 a.m.

JACKPOT STEER SHOW & MARKET HEIFER SHOW

Sunday March 4, 2012 • 8 a.m.

For additional rules and information, contact Chris Caudill 502-564-4983.

13th Annual Cattle Judging Contest

Conducted by the University of Kentucky Livestock Judging Team

*Sponsored by Farm Credit Services of Mid-America
www.e-farmcredit.com*

Saturday, March 3, 2012 • Louisville, Ky.

Open to all 4-H and FFA members

(Seniors: 14 years of age and older as of Jan. 1, 2012)

Contest held at the Kentucky Fair and Expo Center

Registration: 7 a.m. March 3, New Market Hall

Contest at 8 a.m. • Awards at 4 p.m.

For more information contact:

Lashley Williams or Chris Caudill

KDA/Show & Fair Promotion

502-564-4983

- Judging contest is open to all 4-H and FFA teams and members.
 - Entry Fee: \$5 per person.
 - Teams will consist of a maximum of four and a minimum of three contestants. The three high individual scores will comprise the team score.
 - There is no limit on the number of teams a club or chapter may enter.
 - Contestants not designated on a team may compete as individuals.
 - 4-H teams will be separated into Junior and Senior divisions. (Senior: 14 years of age and older as of Jan. 1, 2012)
 - FFA and Senior 4-H teams will compete in the same division.
 - The contest will consist of 5 cattle classes.
 - Senior contestants will give a minimum of two sets of oral reasons.
-

www.edjecast.com



EDJECast.com

live web casting

We are pleased to provide live web casting of this auction through EDJECast.com, allowing you to view and bid online, as if you were at the auction.

We recommend that you have high speed internet access to bid online. Dial-up or poor connections will slow the posting of your bid. If you have questions, contact Jennifer Smith at 866-839-3353.

To register and bid:

- Visit the EDJE Cast website at www.edjecast.com
- Click the "NEED TO REGISTER?" button.
- Create a username and password then fill in the requested information. Click the "REGISTER" button.
- You will receive an email validation of your username and be directed back to the EDJE Cast home page. Log in using your newly created username and password.
- Once you have logged in, select the specific event or auction and click "REGISTER TO BID."
- Fill in all requested information, including the banking info, read and agree to the Terms and Conditions, then click the "Submit" button. You will be assigned and emailed a bidder number.
- The auction video will start about 15 minutes prior to the auction.
- Click the "View EDJE Cast Auction" to view the auction.
- After the sale, please contact the sale manager to arrange payment for your online purchases. Delivery is the responsibility of the buyer and should be arranged with sale management. Liability becomes the sole responsibility of the buyer upon the sale of the animal.

EDJE
print design

2012 Kentucky Farm Bureau Beef Expo Schedule

BREED	SHOW	SALE	
ANGUS	Friday, March 2nd, 10:00 a.m.	Saturday, March 3rd, 12:00 noon	Tim Dievert
BEEFALO	Friday, March 2nd, 2:30 p.m.	Saturday, March 3rd, 11:30 a.m.	Kyle Skidmore
CHAROLAIS	Saturday, March 3rd, 12:00 noon	Saturday, March 3rd, 4:00 p.m.	Greg Hubert
GELBVIEH	Friday, March 2nd, 1:00 p.m.	Saturday, March 3rd, 3:30 p.m.	David Slaughter
LIMOUSIN	Saturday, March 3rd, 10:00 a.m.	Saturday, March 3rd, 3:00 p.m.	Keith Kisse
HEREFORD	Friday, March 2nd, 1:00 p.m.	Saturday, March 3rd, 12:30 p.m.	Earlene Thomas
RED ANGUS	Friday, March 2nd, 10:00 a.m.	Saturday, March 3rd, 10:00 a.m.	Johnnie Cundiff
RED POLL	Friday, March 2nd, 4:00 p.m.	Saturday, March 3rd, 9:30 a.m.	Leo Young
SALERS	Friday, March 2nd, 11:30 a.m.	Saturday, March 3rd, 10:00 a.m.	Donald Johnson
SHORTHORN	Saturday, March 3rd, 10:00 a.m.	Saturday, March 3rd, 1:00 p.m.	Jeff K. & Darla Aegerter
SIMMENTAL	Friday, March 2nd, 4:00 p.m.	Saturday, March 3rd, 11:00 a.m.	Doug Parke
PEN HEIFER	Friday, March 2nd, 2:00 p.m.	Saturday, March 3rd, 2:00 p.m.	Tim Dievert

DON'T MISS THESE OTHER EXPO EVENTS!!!!

Junior Heifer, Steer and Market Heifer Jackpot Shows
Trade Show and Youth Judging Contest

MAJOR CO-SPONSORS:

Kentucky Farm Bureau, Kentucky Farm Credit, Merial, Nutrena,
Kentucky Cattleman's Association, Burkmann Feeds and
The Kentucky Department of Agriculture,
James R. Comer, Commissioner

Additional information: www.kybeefexpo.com

Earlene Thomas
KHA Secretary
2396 Union City Rd.
Richmond, KY 40475

Dated Material



*Kentucky Farm Bureau Beef Expo
Hereford Show and Sale
Show - March 2 - 1 p.m.
Sale - March 3 - 12:30 p.m.*